

Teste a snodo SA BEM30-60-502-DURBAL - BEM30-60-502-DURBAL

<https://www.123cuscinetti.ch/cuscinetti-supporti/teste-snodo/sa/bem30-60-502-durbal>

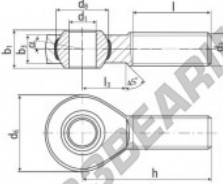
BEM30-60-502



male thread;
maintenance free,
adapter sizes
according to
DIN ISO 12240-4,
series K



**DURBAL® heavy-duty rod ends
with integral spherical
plain bearing in stainless steel**



rod end housing:
stainless steel 1.4301, rolled thread,
surface with pickling treatment

joint ball:
stainless steel, hardened and ground,
surface superfinished

race:
nylon / teflon / glass fibre compound

tolerances:
see page 10

order number	type	measurements [mm]	weight	basic load rating
BEM 30 -60 -502		d ₁ 30 d ₂ M 30 x 2 d ₃ 70 d ₄ 50,75 h ₁ 37 h ₂ 25,0	1,015	C 33800 C ₂ 97100
	type	measurements [mm]		
	BEM 30	h 110 l 66 l ₁ 35 α ₁ 17,0 α ₂ 10,5		

CARATTERISTICHE DEL PRODOTTO

Marchio	DURBAL
N° Ean13	3663952509891
Diametro interno	30 mm
Diametro esterno	70 mm
Spessore	37 mm
Tipo	SA
Peso	1015 g
Il filo	Filetto sinistro
Lubrificazione	senza
Imballaggio	1

contatto@123cuscinetti.ch

CRT4 de Lesquin 60 Rue Du Haut De Sainghin 59273 Fretin FRANCE