

Teste a snodo SA BEM20-60-502-DURBAL - BEM20-60-502-DURBAL

<https://www.123cuscinetti.ch/cuscinetti-supporti/teste-snodo/sa/bem20-60-502-durbal>

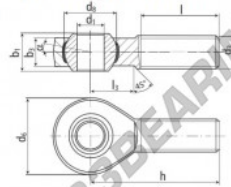
BEM20-60-502



male thread;
maintenance free,
adapter sizes
according to
DIN ISO 12240-4,
series K



**DURBAL® heavy-duty rod ends
with integral spherical
plain bearing in stainless steel**



rod end housing:
stainless steel 1.4301, rolled thread,
surface with pickling treatment

joint ball:
stainless steel, hardened and ground,
surface superfinished

race:
nylon / teflon / glass fibre compound

tolerances:
see page 10

order number	type	measurements [mm]	weight	basic load rating
BEM 20 -60 -502		d ₁ 20 d ₂ M 20 x 1,5 d ₃ 50 d ₄ 34,87 b ₁ 25 b ₂ 18,0	0,327	18960 54800
	type	measurements [mm]		dyn stat.
		h l l ₃ α ₁ [°] α ₂ [°]	[kg]	C [N] C ₂ [N]
BEM 20		78 47 28 14,5 9,0		

CARATTERISTICHE DEL PRODOTTO

Marchio	DURBAL
N° Ean13	3663952509846
Diametro interno	20 mm
Diametro esterno	50 mm
Spessore	25 mm
Tipo	SA
Peso	327 g
Il filo	Filetto sinistro
Lubrificazione	senza
Imballaggio	1

contatto@123cuscinetti.ch

CRT4 de Lesquin 60 Rue Du Haut De Sainghin 59273 Fretin FRANCE