

Teste a snodo SA BEM20-60-501-DURBAL - BEM20-60-501-DURBAL

<https://www.123cuscinetti.ch/cuscinetti-supporti/teste-snodo/sa/bem20-60-501-durbal>

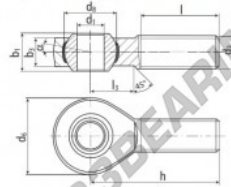
BEM20-60-501



male thread;
maintenance free,
adapter sizes
according to
DIN ISO 12240-4,
series K



**DURBAL® heavy-duty rod ends
with integral spherical
plain bearing in stainless steel**



rod end housing:
stainless steel 1.4301, rolled thread,
surface with pickling treatment

joint ball:
stainless steel, hardened and ground,
surface superfinished

race:
nylon / teflon / glass fibre compound

tolerances:
see page 10

| order number | | measurements [mm] | | | | | weight | | basic load rating | |
|-------------------|-------------------|-------------------|----------------|------------------------------------|------------------------------------|----------------|----------------|----------------|-------------------|--|
| type | right-hand thread | d ₁ | d ₂ | d ₃ | d ₄ | b ₁ | b ₂ | dyn | stat. | |
| BEM 20 -60 | -501 | 20 | M 20 x 1,5 | 50 | 34,87 | 25 | 18,0 | | | |
| measurements [mm] | | weight | | basic load rating | | | | | | |
| type | h | l | l ₃ | α ₁ ¹ [°] | α ₂ ² [°] | [kg] | C | C ₀ | C ₁₀ | |
| BEM 20 | 78 | 47 | 28 | 14,5 | 9,0 | 0,327 | 18960 | | 54800 | |

CARATTERISTICHE DEL PRODOTTO

| | |
|------------------|---------------|
| Marchio | DURBAL |
| N° Ean13 | 3663952509839 |
| Diametro interno | 20 mm |
| Diametro esterno | 50 mm |
| Spessore | 25 mm |
| Tipo | - |
| Peso | 327 g |
| Il filo | - |
| Lubrificazione | - |
| Imballaggio | - |

contatto@123cuscinetti.ch

CRT4 de Lesquin 60 Rue Du Haut De Sainghin 59273 Fretin FRANCE