

Teste a snodo SA BEM08-60-501-DURBAL - BEM08-60-501-DURBAL

<https://www.123cuscinetti.ch/cuscinetti-supporti/teste-snodo/sa/bem08-60-501-durbal>

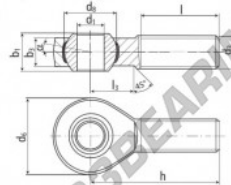
BEM08-60-501



male thread;
maintenance free,
adapter sizes
according to
DIN ISO 12240-4,
series K



**DURBAL® heavy-duty rod ends
with integral spherical
plain bearing in stainless steel**



rod end housing:
stainless steel 1.4301, rolled thread,
surface with pickling treatment

joint ball:
stainless steel, hardened and ground,
surface superfinished

race:
nylon / teflon / glass fibre compound

tolerances:
see page 10

order number		measurements [mm]		measurements [mm]		measurements [mm]		
type	right-hand thread	left-hand thread	d ₁	d ₂	d ₃	d ₄	b ₁	b ₂
BEM 08 -60	-501		8	M 8	24	15,82	12	9,0
type		measurements [mm]		weight		basic load rating		
h	l	l ₁	α ₁ ¹ [°]	α ₂ ² [°]	[kg]	C [N]	C ₂ [N]	
BEM 08	42	25	15	14,5	7,5	0,038	4280	8800

CARATTERISTICHE DEL PRODOTTO

Marchio	DURBAL
N° Ean13	3663952509709
Diametro interno	8 mm
Diametro esterno	24 mm
Spessore	12 mm
Tipo	SA
Peso	38 g
Il filo	Filetto destro
Lubrificazione	senza
Imballaggio	1

contatto@123cuscinetti.ch

CRT4 de Lesquin 60 Rue Du Haut De Sainghin 59273 Fretin FRANCE