

Teste a snodo SI EF35SO-22-501-DURBAL - EF35SO-22-501-DURBAL

<https://www.123cuscinetti.ch/cuscinetti-supporti/teste-snodo/si/ef35so-22-501-durbal>

EF35SO-22-501



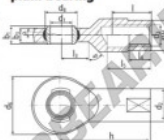
rod end housing:
forged steel, tempered, surface galvanized, free of Cr VI

joint ball:
ball bearing steel, hardened and ground, surface superfinished and chromium plated

race:
nylon / teflon / glass fibre compound

tolerances:
see page 10

DURBAL® heavy-duty rod ends with integral spherical plain bearing



female thread:
maintenance free, adapter sizes according to DIN ISO 12240-4, series E / EH



order number		measurements [mm]											
type	right-hand thread	d ₁	d ₂	d ₃	d ₄	d ₅	d ₆	d ₇	d ₈	b ₁	b ₂	b ₃	h
EF 35 SO -22	-501	35	51	M 36 x 2	82	47,0	25	20	130				
measurements [mm]		weight			basic load rating		dyn.		stat.				
type	l	l ₃	l ₄	l ₅	SW	α ₁ ¹ [°]	α ₂ ¹ [°]	W _{gl}	C ₁₀ [N]	C ₀ [N]	C ₉₀ [N]	C ₅₀ [N]	C ₁ [N]
EF 35 SO	38	41	66	41		6,5	3,5	1,230	70400	180800			

CARATTERISTICHE DEL PRODOTTO

Marchio	DURBAL
N° Ean13	3663952508542
Diametro interno	35 mm
Diametro esterno	82 mm
Spessore	25 mm
Tipo	SI
Peso	1230 g
Il filo	Filetto destro
Lubrificazione	senza
Imballaggio	1

contatto@123cuscinetti.ch

CRT4 de Lesquin 60 Rue Du Haut De Sainghin 59273 Fretin FRANCE