

## Teste a snodo SI EF35-20-502-DURBAL - EF35-20-502-DURBAL

<https://www.123cuscinetti.ch/cuscinetti-supporti/teste-snodo/si/ef35-20-502-durbal>

EF35-20-502



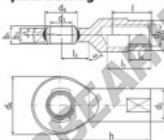
rod end housing:  
forged steel, tempered, surface galvanized, free of Cr VI

joint ball:  
ball bearing steel, hardened and ground, surface superfinished and chromium plated

race:  
nylon / teflon / glass fibre compound

tolerances:  
see page 10

**DURBAL® heavy-duty rod ends with integral spherical plain bearing**



female thread:  
maintenance free, adapter sizes according to DIN ISO 12240-4, series E / EH



order number		measurements [mm]										
type	right-hand thread	d <sub>1</sub>	d <sub>2</sub>	d <sub>3</sub>	d <sub>4</sub>	d <sub>5</sub>	d <sub>6</sub>	d <sub>8</sub>	b <sub>1</sub>	b <sub>2</sub>	b <sub>3</sub>	h
EF 35	-20	-502	35	51	M 36 x 3	82	47,0	25	20	125		
measurements [mm]		weight			basic load rating		dyn.		stat.			
type	l	l <sub>3</sub>	l <sub>4</sub>	l <sub>5</sub>	SW	α <sub>1</sub> <sup>1</sup> [°]	α <sub>2</sub> <sup>1</sup> [°]	l <sub>adj</sub>	C	C <sub>0</sub>		
EF 35		38	36	61	41	6,5	3,5	1,230	70400	180800		

## CARATTERISTICHE DEL PRODOTTO

Marchio	DURBAL
N° Ean13	3663952508528
Diametro interno	35 mm
Diametro esterno	82 mm
Spessore	25 mm
Tipo	SI
Peso	1230 g
Il filo	Filetto sinistro
Lubrificazione	senza
Imballaggio	1

[contatto@123cuscinetti.ch](mailto:contatto@123cuscinetti.ch)

CRT4 de Lesquin 60 Rue Du Haut De Sainghin 59273 Fretin FRANCE