

Teste a snodo SI EF08-20-502-DURBAL - EF08-20-502-DURBAL

<https://www.123cuscinetti.ch/cuscinetti-supporti/teste-snodo/si/ef08-20-502-durbal>

EF08-20-502



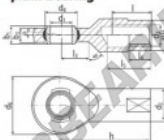
rod end housing:
forged steel, tempered, surface galvanized, free of Cr VI

joint ball:
ball bearing steel, hardened and ground, surface superfinished and chromium plated

race:
nylon / teflon / glass fibre compound

tolerances:
see page 10

DURBAL® heavy-duty rod ends with integral spherical plain bearing



female thread:
maintenance free, adapter sizes according to DIN ISO 12240-4, series E / EH



order number		measurements [mm]									
type	right-hand thread	d ₁	d ₂	d ₃	d ₄	d ₅	b ₁	b ₂	b ₃	b ₄	h
EF 08	-20	-502	8	13	M 8	23	13,0	8	5	36	
measurements [mm]		weight		basic load rating							
type	l	l ₃	l ₄	l ₅	SW	α ₁ ¹ [°]	α ₂ ¹ [°]	kg	C _r [N]	C ₀ [N]	
EF 08	16	12			11	15,0	8,0	0,031	4200	13100	

CARATTERISTICHE DEL PRODOTTO

Marchio	DURBAL
N° Ean13	3663952508320
Diametro interno	8 mm
Diametro esterno	23 mm
Spessore	8 mm
Tipo	SI
Peso	31 g
Il filo	Filetto sinistro
Lubrificazione	senza
Imballaggio	1

contatto@123cuscinetti.ch

CRT4 de Lesquin 60 Rue Du Haut De Sainghin 59273 Fretin FRANCE